



## KM 170/600 R D

Diesel-powered, fully hydraulic industrial sweeper with four-wheel chassis and rear steering. For tackling the biggest, toughest sweeping jobs in the building material or metal-working industries, foundries and other dirt-intensive sectors. With Yanmar 35kW engine.



### 1 Efficient, durable filter

- Flat pleated filter with 10 m<sup>2</sup> filter area.
- Effective filter cleaning with dual scraper.



### 2 Rugged construction

- Solid steel frame.
- Rugged, water-cooled industrial engines.



### 3 Easy to use

- EASY-Operation concept.
- Easy to get in and out.



### 4 Various drives

- Diesel engines conforming to industrial standard.
- LPG engine for indoor and outdoor use.



## KM 170/600 R D

- Powerful industrial motor
- High working and transport speed
- Long periods of uninterrupted operation

### Technical data

<b>Order Number</b>	1.186-127.0	
<b>EAN code</b>	4039784521933	
<b>Drive</b>	4-stroke diesel engine / Yanmar	
<b>Drive - power</b>	<b>kW</b>	35
<b>Max. area performance</b>	<b>m<sup>2</sup>/h</b>	23520
<b>Working width</b>	<b>mm</b>	1350
<b>Working width with 1 side brush</b>	<b>mm</b>	1680
<b>Working width with 2 side brushes</b>	<b>mm</b>	2000
<b>Waste container</b>	<b>l</b>	600
<b>Hill climbing ability</b>	<b>%</b>	18
<b>Operating speed</b>	<b>km/h</b>	14
<b>Filter area</b>	<b>m<sup>2</sup></b>	10
<b>Weight</b>	<b>kg</b>	1530
<b>Dimensions (L x W x H)</b>	<b>mm</b>	2450 × 1750 × 1665

### Equipment

<b>Manual filter cleaning system</b>	■	<b>Sweep function (can be switched off)</b>	■
<b>Traction drive</b>	hydrostatic	<b>Pneumatic wheels</b>	■
<b>Adjustable roller brush</b>	■	<b>Side brush swings out automatically</b>	■
<b>Power steering</b>	■		
<b>Adjustable suction power</b>	■		
<b>Dustpan principle</b>	■		
<b>Travel drive - forward</b>	■		
<b>Travel drive, reverse</b>	■		
<b>Vacuum</b>	■		
<b>Hydraulic container lift</b>	■		
<b>Outdoor applications</b>	■		

■ Included in delivery.

# ACCESSORIES FOR KM 170/600 R D

## 1.186-127.0



		Order Number	Installation ex works	Length / width	Diame- ter	Price	Description	
<b>Flat pleated filter</b>								
Flat-pleated filter KM 170/600	1	6.988-160.0						<input checked="" type="checkbox"/>
	2	6.987-691.0						<input type="checkbox"/>
<b>Standard main roller brushes</b>								
Reversing rolling mill KM 170/600	3	6.987-441.0		1344 mm	400 mm			<input checked="" type="checkbox"/>
<b>Main roller brush, soft/natural</b>								
Reversing rolling mill soft KM 170/600	4	6.987-443.0		1344 mm	400 mm			<input type="checkbox"/>
	5	6.987-469.0		1344 mm	400 mm			<input type="checkbox"/>
<b>Main roller brush, hard</b>								
Reversing rolling mill hard KM 170/600	6	6.987-442.0		1344 mm	400 mm			<input type="checkbox"/>

■ Included in delivery. □ Available accessories.

# ACCESSORIES FOR KM 170/600 R D

## 1.186-127.0



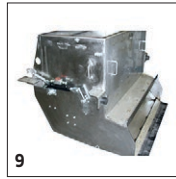
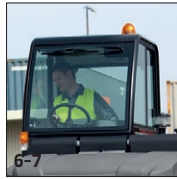
		Order Number	Installation ex works	Length / width	Diame-ter	Price	Description	
<b>Standard side brushes</b>								
Standard side brush	1	6.987-467.0			650 mm			<input checked="" type="checkbox"/>
<b>Side brush, hard</b>								
Side brush, hard	2	6.987-468.0			650 mm			<input type="checkbox"/>
<b>Side brush, soft</b>								
	3	6.987-466.0			650 mm			<input type="checkbox"/>

■ Included in delivery. □ Available accessories.

# ACCESSORIES FOR KM 170/600 R D

## 1.186-127.0

**KÄRCHER**



		Order Number	Installation ex works				Price	Description	
<b>Lighting</b>									
ABS lighting for road use	1	2.851-280.7	2.851-280.7					Prescribed lighting for use on public roads.	<input type="checkbox"/>
TÜV approved	2	2.851-285.7	2.851-285.7						<input type="checkbox"/>
Add-on kit illumination streets	3	2.852-151.7	2.852-151.7						<input type="checkbox"/>
Working light	4	2.851-279.0	2.851-279.7						<input type="checkbox"/>
<b>Weatherproof cab</b>									
	5	2.851-674.7	2.851-674.7						<input type="checkbox"/>
Comfortable cab with heating	6	2.851-265.7	2.851-265.7						<input type="checkbox"/>
Comfortable cab	7	2.851-264.7	2.851-264.7						<input type="checkbox"/>
<b>Other mounting kits</b>									
	8	6.373-014.0							<input type="checkbox"/>
Stainless steel waste container	9	6.961-928.7	6.961-928.7						<input type="checkbox"/>
<b>Protective roof for operator</b>									
Add-on kit protection shield	10	2.851-268.7	2.851-268.7						<input type="checkbox"/>
Canopy	11	2.851-686.0							<input type="checkbox"/>
Canopy with windscreen and windscreen wiper	12	2.851-270.7	2.851-270.7						<input type="checkbox"/>
<b>Sweeping/Vacuuming</b>									
Side brush cover	13	2.851-287.0							<input type="checkbox"/>
Third side brush	14	2.851-277.7	2.851-277.7						<input type="checkbox"/>
	15	2.851-278.7	2.851-278.7						<input type="checkbox"/>
<b>Side brushes, left</b>									
	16	2.851-275.0	2.851-275.7						<input type="checkbox"/>

■ Included in delivery. □ Available accessories.

# ACCESSORIES FOR KM 170/600 R D

## 1.186-127.0



		Order Number	Installation ex works				Price	Description	
<b>Tyres, puncture-proof</b>									
Wheel set solid rubber	1	4.515-331.0	4.515-331.7						<input type="checkbox"/>

■ Included in delivery.    □ Available accessories.

# ACCESSORIES FOR KM 170/600 R D

## 1.186-127.0

		Order Number	Installation ex works				Price	Description	
Water spraying system									
	1	2.851-284.0	2.851-284.7						<input type="checkbox"/>

■ Included in delivery.     Available accessories.