



Wide range of solutions



TAURULIFT LINE

COMPACT HANDLERS WITH LOAD CAPACITY OF 1.300, 1.350, 2.000, 2.300, 2.700 & 3.000 Kg

www.ausa.com

THE TAURULIFT LINE IS THE WIDEST RANGE OF COMPACT HANDLERS ON THE MARKET



T 133 H / T 133 Hx4

1.300 Kg at 2,7 m



T 144 H

1.350 Kg at 4 m



T 204 H

2.000 Kg at 4.2 m

HANDLERS WITH SMART AND INNOVATIVE DESIGN THAT
PROVIDES MAXIMUM EFFICIENCY WITH HIGH USER-FRIENDLINESS
AND EASY MAINTENANCE



T 235 H
2.300 Kg at 5 m



T 276 H / T 306 H
2.700 / 3.000 Kg at 6 m



T 307 H
3.000 Kg at 7 m

CONCEPT DEFINITION

Basic and economic handler that is very effective to handle loads with forks, buckets, clamps, etc. in very tight areas and a single machine which carries out a maximum range of tasks.

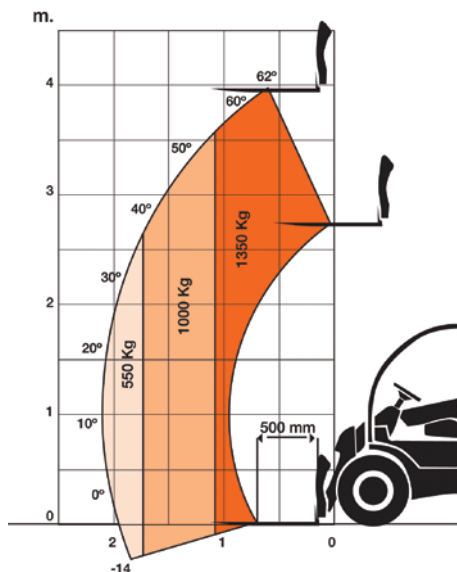


FEATURES T133H 4x2 / 4x4

Load capacity	1300 Kg
Lifting height	2700 mm
Overall length	3600 mm
Overall height	1940 mm
Cab internal width	900 mm
Total weight	2200 Kg
Engine	Kubota D-1105 16.8KW
Transmission	Hidrostatic 1 gear
Front axle	Driving
Rear axle	Steering driving
Steering	Hydraulic 2WS
Turning radius	2930 mm
Maximum speed	20 Km/h



TAURULIFT T133H &



FEATURES T 144 H	
Load capacity	1350 Kg
Lifting height	4000 mm
Overall length	3710 mm
Overall height	1950 mm
Cab internal width	900 mm
Total weight	2400 Kg
Engine	Kubota V-1505 22.7KW
Transmission	Hidrostatic
Front axle	Driving
Rear axle	Steering and driving
Steering	Hydraulic 2WS
Turning radius	2930 mm
Maximum speed	20 Km/h



ADVANTAGES

Lateral boom and rear engine position allows a reduced width to maneuver in inaccessible areas.

Front plate with a great swivel which allows a high versatility for handling loads.

Very low machine weight provides low tire pressure on the ground and reduces erosion.

Extraordinary rooming and ergonomic driving site that creates a good working comfort.

Front-chassis driving site with all round visibility facilitating the job and increasing safety.

Great chassis ground clearance combined with the 4WD improves the operation on rough terrains.

Patented 2/4WD transmission with advanced hydrostatic technology gives an outstanding dynamic performance to maneuver.

Rear counterweight fully protects the machine and gives maximum stability and load capacity.

The easy quick tach front plate allows a safe job when exchanging attachments.

The light machine weight makes its trailer transportability possible.

Cab with very low weight (1,9m) and the narrowest width on the market (1,4m) provides an extraordinary accessibility to any tight zone with limited height.

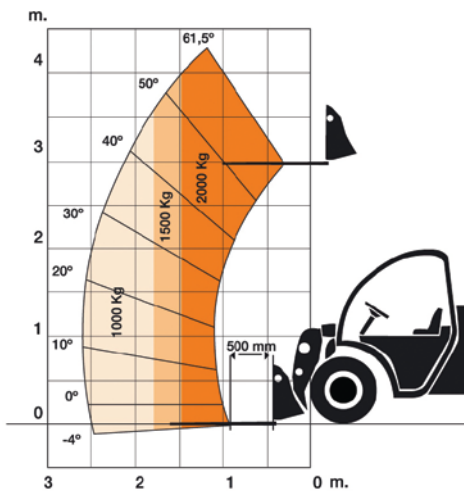
The real alternative to the compact wheeled loaders, but with higher capacity, safety and comfort.

T144H

THE COMPACTEST AND LIGHTEST HANDLERS ON THE MARKET WITH AN OUTSTANDING LOAD CAPACITY UP TO 1.350 KG AT A LIFTING HEIGHT OF UP TO 4M

CONCEPT DEFINITION

An outstanding handler with surprising performance to handle loads and to move bulk materials with bucket. Its excellent maneuverability in tight areas and rough terrain situations makes it a winner.

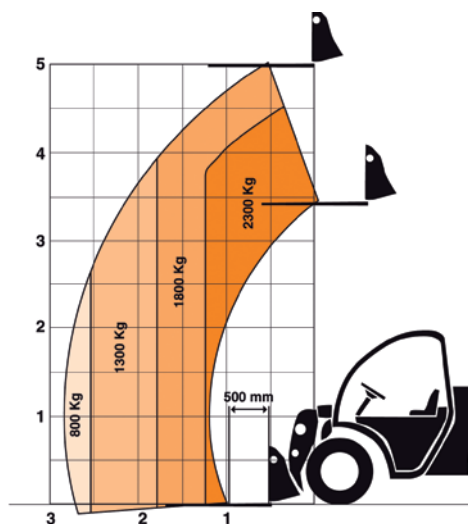


FEATURES T 204 H

Load capacity	2000 Kg
Lifting height	4200 mm
Overall length	4660 mm
Overall height	1990 mm
Cab internal width	890 mm
Total weight	4050 Kg
Engine	Kubota V-2403 36.5KW
Transmission	Hidrostatic Rexroth
Front axle	Driving and steering
Rear axle	Driving, steering and oscilating
Steering	Hydraulic 4WS
Turning radius	2900 mm
Maximum speed	24 Km/h



TAURULIFT T204H &



FEATURES T 235 H

Load capacity	2300 Kg
Lifting height	5000 mm
Overall length	5100 mm
Overall height	2050 Kg
Cab internal width	890 mm
Total weight	4700 Kg
Engine	Kubota V2403 36.5KW
Transmission	Hydrostatic Rexroth
Front axle	Driving and steering
Rear axle	Driving, steering and oscilating
Steering	Hydraulic 4WS
Turning radius	3450 mm
Maximum speed	24 Km/h



ADVANTAGES

Lateral boom and rear engine position allows the most reduced width of the category that provides and outstanding manoeuvrability as the compact loaders offer.

The balance between the power of its engine and the torque of its progressive hydrostatic transmission provides surprising productivity handling loads.

A prominent rear counter weight unlike most others gives an extraordinary load capacity with enormous stability and protects the machine from impacts.

Chassis with front cab with all-round visibility facilitates the job and increases safety.

Great chassis ground clearance combined with a permanent 4WD improves the operation on rough terrain operations.

Considered as the only handler that is equipped with the tilting cab, it is an innovation that provides a reduced maintenance cost and allows an easy access for the periodic maintenance.

Front plate with hydraulic quick tach provides an easy and safe interexchange of attachments to allow using the handler for a wide scope of tasks.

Height cab of only 2m makes it possible to handle materials in constructions underground and in green houses in agriculture.

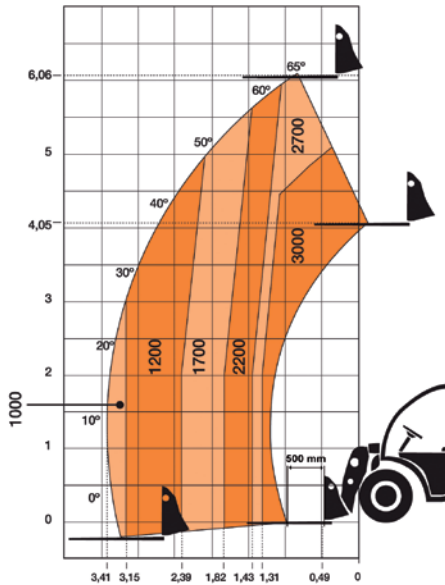
The real alternative to the skid steer loaders and compact with wheeled loaders, but with higher performances in capacity, safety and comfort.

T235H

THE HANDLERS WITH THE BEST RELATION LOAD CAPACITY AND OVERALL DIMENSIONS AND THE ONLY ONE WITH A TILTING CAB ADVANTAGE

CONCEPT DEFINITION

A real 3 ton capacity handler with outstanding performance in maneuverability and stability at a maximum load capacity in height and reach that makes it the best in its class.

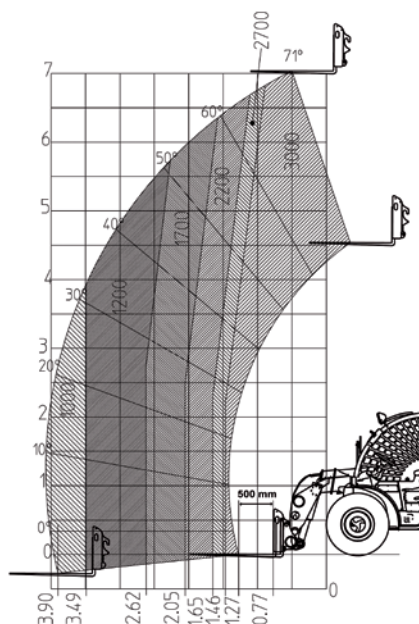


FEATURES T 276 H / T 306 H

Load capacity	2700 / 3000 Kg
Lifting height	6100 mm
Overall length	5240 mm
Overall height	2070 mm
Cab internal width	890 mm
Total weight	5015 Kg
Engine	Kubota V-3600 63KW
Transmission	Hydrostatic Rexroth
Front axle	Driving and steering
Rear axle	Driving, steering and oscillating
Steering	Hydraulic 4WS
Turning radius	3090 mm
Maximum speed	24 Km/h



TAURULIFT T306H &



FEATURES T 307 H

Load capacity	3000 Kg
Lifting height	7000 mm
Overall Length	5550 mm
Overall height	2070 mm
Cab internal width	890 mm
Total weight	5300 Kg
Engine	Kubota V-3600 63KW
Transmission	Hydrostatic Rexroth
Front axle	Driving and steering
Rear axle	Driving, steering and oscilating
Steering	Hydraulic 4WS
Turning radius	3090 mm
Maximum speed	24 Km/h



ADVANTAGES

Lateral boom and rear engine position allows the most reduced width of the category that provides and outstanding manoeuvrability as the compact loaders offer.

The balance between the power of its engine and the torque of its progressive hydrostatic transmission provides surprising productivity handling loads.

A prominent rear counter weight unlike most others gives an extraordinary load capacity with enormous stability and protects the machine from impacts.

Chassis with front cab with all-round visibility facilitates the job and increases safety.

Great chassis ground clearance combined with a permanent 4WD improves the operation on rough terrain operations.

Considered as the only handler that is equipped with the tilting cab, it is an innovation that provides a reduced maintenance cost and allows an easy access for the periodic maintenance.

Front plate with hydraulic quick tach provides an easy and safe interexchange of attachments to allow using the handler for a wide scope of tasks.

Height cab of only 2m makes it possible to handle materials in constructions underground and in green houses in agriculture.

Excellent maneuverability handling loads in farming and industry in comparison with other handlers and specially the tractors.

T307H

THE MOST INNOVATIVE COMPACT HANDLER WITH THE HIGHEST CAPACITY AT A LIFTING HEIGHT OF 6 & 7 M. IN THE 3 TON CATEGORY





Chasis support for fork lifting (Optional T133/144 H)



SCOPE OF ACTIVITIES OF USE:

Plant hire companies	Sport facilities
Gardening / Landscaping	Oysters producers
Plant nurseries	Army
Livestock	Red cross / Red moon
Chicken farmers	N.G.O.
Honey producers	Aftermath rescue
Small family owned industries	Mining
Builders merchands Sawmills	Plastic, electronics, paper, wood recycling
Housing rehabilitation	Small stores
Street public works	Foundries
Civil construction	Precast concrete industry
Fishing ports	Residential construction
Farms / Sawmills	Road maintenance facilities (Truck load potash)
Fruit plantations	Farmers cooperatives (Grain storage)
Winery (property bottleneck)	Industrial cleaning (Waste removal)
Outdoor events & spectacles	Water purification facilities
Golf courses	Oil and gas wells (maintenance task)

ATTACHMENTS

Back rest load	Universal quick coupling (T204H, T235H, T306H, T307H)
Integrated side-shift carriage	Broom sweeper
Buckets up to 1000l.	Industrial dragging sweeper with hopper
Bucket with forks	Forks for straw bales
Bucket multifunctions 4 in 1	Manure forks
Forks with cramp	FEM II fork plate carriage

THE TAURULIFT HANDLERS ARE DESIGNED TO FULFIL THE HIGHEST REQUIREMENTS OF USE IN MULTIPLE TASKS IN CONSTRUCTION, AGRICULTURE, INDUSTRY AND RECYCLING.



AUSA CENTER, S.L.U. is a family owned company established in 1956 dedicated to design, manufacturer and comercialization of compact industrial vehicles.

AUSA exports in over 100 countries through a worldwide network of more than 500 dealers. The quality of its products are certificated according to the international ISO 9001 standards. This means that we implement a quality assurance system in machine design, purchasing management, the production system and customer support.

The AUSA brand is a guarantee of an accurate and prompt spare part service and a personalized customer support through specialized engineers.

Dealer stamp

AUSA Center, S.L.U.
Ctra. de Vic, Km 2.8
08243 - Manresa
BARCELONA (ESPAÑA)
Tel.: +34 93 874 73 11
ausa@ausa.com

AUSA Madrid : Tel +34 916690006 - ausa.madrid@ausa.com
AUSA France : Tel +33 468543897 - ausa.france@ausa.com
AUSA (UK) : ausa.uk@ausa.com
AUSA Verkauf & Service Deutschland: Tel. +49 (0) 2385 9359362
info@ausa.de
AUSA Northamerica Corp: ausa.corp@ausa.com
BEIJING Rep. Office: Tel 86-10-8597 1983 - ausa.china@ausa.com



www.ausa.com



(Sede central AUSA-Manresa)