



Effortless fingertip controls



Easy service access



FeatherTouch electric steering

Frame and body

- **Low centre of gravity** contributes to EDiA's outstanding residual capacity and driver confidence.

Mast and fork assembly

- **Exceptional visibility** through a wide range of high-strength, clear-view masts allows handling with total confidence.

Drive

- **Optional Pitching Control System (PCS)** senses travel on bumpy ground – automatically smoothing motion to stabilise load pitching: reducing the risk of the load becoming unstable.
- **Efficient drive (and lift) motors** combine with strong regenerative braking and advanced electric steering technology to minimise energy consumption and extend shifts.

Steering system

- **Controlled Cornering System (CCS)** assists safe turning by intuitively reducing the maximum travel speed in proportion to the steering angle.
- **FeatherTouch steering** delivers a natural steering response and – with just six turns lock-to-lock – gives precise, effortless control in intensive applications.

Brakes

- **Wet disc brakes** are virtually maintenance-free and sealed to tough IP54 standards, to protect EDiA in wet or dirty workplaces – and ensure it's a clean worker in food applications.

- **Electronically activated parking brake** is automatically applied whenever the operator leaves the seat and can also be activated by simply pressing a button.

- **Automatic hill hold** applies braking when the accelerator is released on a gradient, preventing accidental roll-back.

Hydraulics

- **Variable speed on all hydraulic functions** is smoothly and intuitively managed by EDiA's command software.
- **Mitsubishi 11.5kW hydraulic motor** proven to withstand intensive duty in the most demanding of applications, delivers exceptionally long service life.

Electrical and control systems

- **Five performance pre-sets** from minimal energy to high performance – are quickly chosen by the driver by push button.
- **Full programmability** through a laptop connection allow service engineers to precisely adjust EDiA to meet an application's exact needs, as well as run diagnostic checks.
- **Integrated Presence System 2 (IPS²)** pioneered by Mitsubishi prevents all movement of truck and mast if the operator is not seated.
- **Wider choice of batteries** available because of the wide range of options with its standard DIN dimensions EDiA is more easily configured to the user's precise

needs.

- **Sideways battery exchange option** has slide-out rollers integrated into the chassis for quick and easy battery change in multi-shift operations.

- **LED work lights front and rear** provide a natural bright white light with low energy consumption and long service life.

Other features

- **Long service interval** thanks to EDiA's design and build quality means fewer service visits are needed.
- **Waterproof** to tough IPX4 standards throughout the chassis and to stringent IP54 specifications on motors, brakes and other vital enclosures, EDiA protects itself – while keeping its workplace clean.
- **RapidAccess features** include a quick-release floor plate and wide-opening battery cover, for fast and simple checks.

Options include

- **Load weight indicator**
- **Integrated side shift**
- **Wide range of masts up to 7m**
- **Wide range of cabins**
- **Wide range of attachments**
- **Choice of seats**
- **Choice of fingertip or lever control**
- **Wide range of accessories**
- **Foot direction control**
- **Dual pedal system**
- **Cold store modification (to -35°C)**

When reliability is everything...

Like any product bearing the Mitsubishi name, our materials handling equipment benefits from the huge resources and cutting-edge technology of one of the world's largest corporations. So when we promise you **quality, reliability** and **value for money**, you know it's a guarantee we have the power to deliver.

Every model in our comprehensive, award-winning range of forklift trucks and warehouse equipment is built to a high specification and is designed to keep on working for you... day after day... year after year... whatever the job... whatever the conditions.

To ensure your truck stays in constant productive action, we have a network of local dealers – hand-picked for their commitment to customer care... and backed up by the Mitsubishi Forklift Trucks organisation. No matter where you are, we have a dealer close by – ready and willing to meet your needs.

That friendly local service covers everything from identifying the perfect model and configuration for your application to providing competitive, flexible finance and maintenance packages, unbeatable warranties, long and short term hire, and highly responsive field service and repairs... as well as the industry's quickest and most reliable parts supply.

Only Mitsubishi can give you this combination of global engineering excellence and outstanding local support... only Mitsubishi offers you such a quality product at such an affordable price... and only Mitsubishi places reliability as high as you do in its priorities. Contact your local dealer now and see what Mitsubishi can do for you.

You can find your nearest dealer at www.mitforklift.com



EDiA EM

Electric Counterbalance • 3 & 4 Wheel Solid Pneumatic Tyres
48 Volt • 1.3 – 2.0 tonnes

Intuitive performance... that defines driveability

Independent tests over 25 years show that 'driveability' is the single most important factor that improves forklift productivity. When that's achieved, the operator is at one with the machine – without thinking. No surprises. Totally in control.

Mitsubishi EDiA EM is renowned for its driveability. Our designers ensure that everything feels intuitive and natural – and that distractions are eliminated.

What's more, it delivers top performance in its class, is built tough, superbly agile and boasts many industry-leading features. Its rugged four-wheel range is partnered with seven three-wheel models which are exceptionally agile in narrow aisles.

Operator compartment and controls

- **ErgoCentric cab design** delivers a spacious, practical cab that's easy to enter, keeps everything in easy reach, offers exceptional all-round visibility and is comfortable throughout the longest shifts.
- **FeatherTouch steering** maximises confidence, control and comfort, thanks to a small radius, low-effort wheel and intelligent digital processing.
- **Multi-function colour display** display provides a clear, bright screen – even in direct sunlight – and includes speedometer, battery discharge meter, performance mode and other truck data.
- **Simple pushbuttons** make accessing the truck's menu or modes very easy – even if an operator is wearing gloves.
- **Ergonomic levers** provide a familiar feel and smoothly variable speed control.
- **ErgoCentric fingertip control unit option** delivers effortless, confident and precise hydraulic operation within a fatigue-minimising armrest.
- **Low-noise design** ensures the sound level at the operator's ear is exceptionally quiet – less than 67 dB(A).
- **VersaCab cabin range options** includes our unique, award-winning 'Hi-Viz' clear composite front roof, front and back glass windows (both with washers/wipers) and steel doors – as well as a CE-certified removable PVC door option for occasional use.



FB13PNT
FB15PNT
FB16CPNT
FB16PNT
FB18CPNT
FB18PNT
FB20PNT
FB16CPN
FB16PN
FB18CPN
FB18PN
FB20PN



CESM 1785 (10/16)
© 2016 MCFE
Printed in The Netherlands

mitforklift@mcf.nl www.mitforklift.com

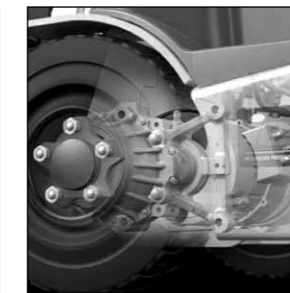
NOTE: Performance specifications may vary depending on standard manufacturing tolerances, vehicle condition, types of tyres, floor or surface conditions, applications or operating environment. Trucks may be shown with non-standard options. Specific performance requirements and locally available configurations should be discussed with your distributor of Mitsubishi forklift trucks. Mitsubishi follows a policy of continual product improvement. For this reason, some materials, options and specifications could change without notice.



| Characteristics | | | | | | | | | |
|----------------------------|---|----------------|------------|---------------|---------------|---------------|---------------|---------------|---------------|
| 1.1 | Manufacturer (abbreviation) | | Mitsubishi | Mitsubishi | Mitsubishi | Mitsubishi | Mitsubishi | Mitsubishi | Mitsubishi |
| 1.2 | Manufacturer's model designation | | FB13PNT | FB15PNT | FB16CPNT | FB16PNT | FB18CPNT | FB18PNT | FB20PNT |
| 1.3 | Power source: (battery, diesel, LP gas, petrol) | | Electric | Electric | Electric | Electric | Electric | Electric | Electric |
| 1.4 | Operator type: pedestrian, (operator)-standing, -seated | | Seated | Seated | Seated | Seated | Seated | Seated | Seated |
| 1.5 | Load capacity | Q | kg | 1300 | 1500 | 1600 | 1600 | 1800 | 2000 |
| 1.6 | Load center distance | c | (mm) | 500 | 500 | 500 | 500 | 500 | 500 |
| 1.8 | Load distance, axle to fork face | x | (mm) | 373 | 373 | 373 | 373 | 373 | 384 |
| 1.9 | Wheelbase | y | (mm) | 1285 | 1285 | 1395 | 1505 | 1395 | 1505 |
| Weight | | | | | | | | | |
| 2.1 | Truck weight, without load / including battery (simplex mast, lowest lift height) | | kg | 2779 | 2972 | 3034 | 3134 | 3134 | 3227 |
| 2.2 | Axle loading with maximum load, front/rear (simplex mast, lowest lift height) | | kg | 3564/515 | 3897/575 | 4053/581 | 4068/666 | 4378/556 | 4383/644 |
| 2.3 | Axle loading without load, front/rear (simplex mast, lowest lift height) | | kg | 1381/1398 | 1378/1594 | 1451/1583 | 1540/1594 | 1452/1683 | 1539/1688 |
| Wheels, Drive Train | | | | | | | | | |
| 3.1 | Tyres: V=solid, L=pneumatic, SE=solid pneumatic - front/rear | | | SE / SE | SE / SE | SE / SE | SE / SE | SE / SE | SE / SE |
| 3.2 | Tyre dimensions, front | | | 18x7-8 | 18x7-8 | 18x7-8 | 18x7-8 | 18x7-8 | 200/50-10 |
| 3.3 | Tyre dimensions, rear | | | 140/55-9 | 140/55-9 | 140/55-9 | 140/55-9 | 140/55-9 | 140/55-9 |
| 3.5 | Number of wheels, front/rear (x=driven) | | | 2x/2 | 2x/2 | 2x/2 | 2x/2 | 2x/2 | 2x/2 |
| 3.6 | Track width (center of tyres), front | b10 | (mm) | 920 | 920 | 920 | 920 | 920 | 938 |
| 3.7 | Track width (center of tyres), rear | b11 | (mm) | 174 | 174 | 174 | 174 | 174 | 174 |
| Dimensions | | | | | | | | | |
| 4.1 | Mast tilt, forwards/backwards | α/β | ° | 5/7.5 | 5/7.5 | 5/7.5 | 5/7.5 | 5/7.5 | 5/7.5 |
| 4.2 | Height with mast lowered (see tables) | h1 | (mm) | 2125 | 2125 | 2125 | 2125 | 2125 | 2125 |
| 4.3 | Free lift (see tables) | h2 | (mm) | 80 | 80 | 80 | 80 | 80 | 80 |
| 4.4 | Lift height (see tables) | h3 | (mm) | 3290 | 3290 | 3290 | 3290 | 3290 | 3290 |
| 4.5 | Overall height with mast raised | h4 | (mm) | 4342 | 4342 | 4342 | 4342 | 4342 | 4342 |
| 4.7 | Height to top of overhead guard | h6 | (mm) | 2050 | 2050 | 2050 | 2050 | 2050 | 2050 |
| 4.8 | Seat height | h7 | (mm) | 974 | 974 | 974 | 974 | 974 | 974 |
| 4.12 | Tow coupling height | h10 | (mm) | 575 | 575 | 575 | 575 | 575 | 575 |
| 4.19 | Overall length | l1 | (mm) | 2998 | 2998 | 3108 | 3218 | 3108 | 3229 |
| 4.20 | Length to fork face (includes fork thickness) | l2 | (mm) | 1848 | 1848 | 1958 | 2068 | 1958 | 2079 |
| 4.21 | Overall width | b1/b2 | (mm) | 1090 | 1090 | 1090 | 1090 | 1090 | 1140 |
| 4.22 | Fork dimensions (thickness, width, length) | s / e / l | (mm) | 35x100x1150 | 35x100x1150 | 35x100x1150 | 35x100x1150 | 35x100x1150 | 35x100x1150 |
| 4.23 | Fork carriage to DIN 15 173 A/B/no | | | 2A | 2A | 2A | 2A | 2A | 2A |
| 4.24 | Fork carriage width | b3 | (mm) | 920 | 920 | 920 | 920 | 920 | 920 |
| 4.31 | Ground clearance under mast, with load | m1 | (mm) | 95 | 95 | 95 | 95 | 95 | 95 |
| 4.32 | Ground clearance at center of wheelbase, with load (forks lowered) | m2 | (mm) | 85 | 85 | 85 | 85 | 85 | 85 |
| 4.33 | Working aisle width with 1000 x1200 mm pallets, crosswise | Ast | (mm) | 3173 | 3173 | 3283 | 3393 | 3283 | 3403 |
| 4.34 | Working aisle width with 800 x1200 mm pallets, crosswise | Ast | (mm) | 2993 | 2993 | 3103 | 3213 | 3103 | 3222 |
| 4.35 | Turning circle radius | Wa | (mm) | 1475 | 1475 | 1585 | 1695 | 1585 | 1695 |
| 4.36 | Minimum distance between centers of rotation | b13 | (mm) | 0 | 0 | 0 | 0 | 0 | 0 |
| Performance | | | | | | | | | |
| 5.1 | Travel speed, with/without load | | km/h | 16 / 16 | 16 / 16 | 16 / 16 | 16 / 16 | 16 / 16 | 16 / 16 |
| 5.2 | Lifting speed, with/without load | | m/s | 0.5 / 0.6 | 0.5 / 0.6 | 0.5 / 0.6 | 0.5 / 0.6 | 0.44 / 0.6 | 0.4 / 0.6 |
| 5.3 | Lowering speed, with/without load | | m/s | 0.52 / 0.5 | 0.52 / 0.5 | 0.52 / 0.5 | 0.52 / 0.5 | 0.52 / 0.5 | 0.52 / 0.5 |
| 5.5 | Rated drawbar pull, with/without load | | N | 2810 / 3130 | 2720 / 3090 | 2680 / 3070 | 2650 / 3050 | 2610 / 3050 | 2580 / 3020 |
| 5.6 | Maximum drawbar pull, with/without load (5 min short duty) | | N | 11390 / 11710 | 11290 / 11660 | 12020 / 12410 | 12160 / 12550 | 11950 / 12390 | 12090 / 12530 |
| 5.7 | Gradeability, with/without load | | % | 11 / 18 | 10 / 16 | 11 / 16 | 9 / 15 | 9 / 15 | 8 / 14 |
| 5.8 | Maximum gradeability, with/without load | | % | 28 / 35 | 26 / 35 | 27 / 35 | 26 / 35 | 25 / 35 | 23 / 35 |
| 5.9 | Acceleration time (10 metres) with/without load | | s | 4.1 / 3.6 | 4.2 / 3.7 | 4.3 / 3.7 | 4.3 / 3.8 | 4.3 / 3.8 | 4.4 / 3.9 |
| 5.10 | Service brakes (mechanical/hydraulic/electric/pneumatic) | | | Mech./hydr. | Mech./hydr. | Mech./hydr. | Mech./hydr. | Mech./hydr. | Mech./hydr. |
| Electric motors | | | | | | | | | |
| 6.1 | Drive motor capacity (60 min. short duty) | | kW | 4.5x2 | 4.5x2 | 4.5x2 | 4.5x2 | 4.5x2 | 4.5x2 |
| 6.2 | Lift motor output at 15% duty factor | | kW | 11.5 | 11.5 | 11.5 | 11.5 | 11.5 | 11.5 |
| 6.3 | Battery to DIN 43 531/35/36 A/B/C/no | | | DIN 43531 A | DIN 43531 A | DIN 43531 A | DIN 43531 A | DIN 43531 A | DIN 43531 A |
| 6.4 | Battery voltage/capacity at 5-hour discharge | | V/Ah | 48V / 500Ah | 48V / 500Ah | 48V / 625Ah | 48V / 750Ah | 48V / 625Ah | 48V / 750Ah |
| 6.5 | Battery weight | | kg | 715 | 715 | 855 | 1025 | 855 | 1025 |
| 6.6 | Energy consumption according to VDI 60 cycle | | kWh/h | - | - | - | - | - | - |
| Miscellaneous | | | | | | | | | |
| 8.1 | Type of drive control | | | AC | AC | AC | AC | AC | AC |
| 8.2 | Maximum operating pressure for attachments | | bar | 181 | 181 | 181 | 181 | 181 | 181 |
| 8.3 | Oil flow for attachments | | l/min | - | - | - | - | - | - |
| 8.4 | Noise level, value at operator's ear (EN 12053) | | dB(A) | 66 | 66 | 66 | 66 | 66 | 66 |
| 8.5 | Towing coupling design / DIN type, ref. | | | 15170 / H | 15170 / H | 15170/H | 15170/H | 15170 / H | 15170 / H |

Continuing improvement may lead to changes in these specifications.

| Characteristics | | | Mitsubishi | Mitsubishi | Mitsubishi | Mitsubishi | Mitsubishi |
|---------------------|---|------------------|---------------|---------------|---------------|-------------|-------------|
| 1.1 | Manufacturer (abbreviation) | | Mitsubishi | Mitsubishi | Mitsubishi | Mitsubishi | Mitsubishi |
| 1.2 | Manufacturer's model designation | | FB16CPN | FB16PN | FB18CPN | FB18PN | FB20PN |
| 1.3 | Power source: (battery, diesel, LP gas, petrol) | | Electric | Electric | Electric | Electric | Electric |
| 1.4 | Operator type: pedestrian, (operator)-standing, -seated | | Seated | Seated | Seated | Seated | Seated |
| 1.5 | Load capacity | Q kg | 1600 | 1600 | 1800 | 1800 | 2000 |
| 1.6 | Load center distance | c (mm) | 500 | 500 | 500 | 500 | 500 |
| 1.8 | Load distance, axle to fork face | x (mm) | 373 | 373 | 373 | 373 | 384 |
| 1.9 | Wheelbase | y (mm) | 1446 | 1556 | 1446 | 1556 | 1556 |
| Weight | | | | | | | |
| 2.1 | Truck weight, without load / including battery (simplex mast, lowest lift height) | kg | 3044 | 3095 | 3099 | 3161 | 3325 |
| 2.2 | Axle loading with maximum load, front/rear (simplex mast, lowest lift height) | kg | 3999/645 | 4039/656 | 4315/584 | 4343/618 | 4693/631 |
| 2.3 | Axle loading without load, front/rear (simplex mast, lowest lift height) | kg | 1433/1611 | 1541/1554 | 1428/1671 | 1533/1628 | 1557/1768 |
| Wheels, Drive Train | | | | | | | |
| 3.1 | Tyres: V=solid, L=pneumatic, SE=solid pneumatic - front/rear | | SE / SE | SE / SE | SE / SE | SE / SE | SE / SE |
| 3.2 | Tyre dimensions, front | | 18x7-8 | 18x7-8 | 18x7-8 | 18x7-8 | 200/50-10 |
| 3.3 | Tyre dimensions, rear | | 16x6-8 | 16x6-8 | 16x6-8 | 16x6-8 | 16x6-8 |
| 3.5 | Number of wheels, front/rear (x=driven) | | 2x/2 | 2x/2 | 2x/2 | 2x/2 | 2x/2 |
| 3.6 | Track width (center of tyres), front | b10 (mm) | 920 | 920 | 920 | 920 | 938 |
| 3.7 | Track width (center of tyres), rear | b11 (mm) | 898 | 898 | 898 | 898 | 898 |
| Dimensions | | | | | | | |
| 4.1 | Mast tilt, forwards/backwards | α/β ° | 5/7.5 | 5/7.5 | 5/7.5 | 5/7.5 | 5/7.5 |
| 4.2 | Height with mast lowered (see tables) | h1 (mm) | 2125 | 2125 | 2125 | 2125 | 2125 |
| 4.3 | Free lift (see tables) | h2 (mm) | 80 | 80 | 80 | 80 | 80 |
| 4.4 | Lift height (see tables) | h3 (mm) | 3290 | 3290 | 3290 | 3290 | 3290 |
| 4.5 | Overall height with mast raised | h4 (mm) | 4342 | 4342 | 4342 | 4342 | 4342 |
| 4.7 | Height to top of overhead guard | h6 (mm) | 2050 | 2050 | 2050 | 2050 | 2050 |
| 4.8 | Seat height | h7 (mm) | 974 | 974 | 974 | 974 | 974 |
| 4.12 | Tow coupling height | h10 (mm) | 575 | 575 | 575 | 575 | 575 |
| 4.19 | Overall length | l1 (mm) | 3302 | 3412 | 3302 | 3412 | 3423 |
| 4.20 | Length to fork face (includes fork thickness) | l2 (mm) | 2152 | 2262 | 2152 | 2262 | 2273 |
| 4.21 | Overall width | b1/b2 (mm) | 1090 | 1090 | 1090 | 1090 | 1140 |
| 4.22 | Fork dimensions (thickness, width, length) | s / e / l (mm) | 35x100x1150 | 35x100x1150 | 35x100x1150 | 35x100x1150 | 35x100x1150 |
| 4.23 | Fork carriage to DIN 15 173 A/B/no | 2A | 2A | 2A | 2A | 2A | 2A |
| 4.24 | Fork carriage width | b3 (mm) | 920 | 920 | 920 | 920 | 920 |
| 4.31 | Ground clearance under mast, with load | m1 (mm) | 95 | 95 | 95 | 95 | 95 |
| 4.32 | Ground clearance at center of wheelbase, with load (forks lowered) | m2 (mm) | 85 | 85 | 85 | 85 | 85 |
| 4.33 | Working aisle width with 1000 x1200 mm pallets, crosswise | Ast (mm) | 3473 | 3588 | 3473 | 3588 | 3599 |
| 4.34 | Working aisle width with 800 x1200 mm pallets, crosswise | Ast (mm) | 3273 | 3388 | 3273 | 3388 | 3399 |
| 4.35 | Turning circle radius | Wa (mm) | 1900 | 2015 | 1900 | 2015 | 2015 |
| 4.36 | Minimum distance between centers of rotation | b13 (mm) | 481 | 544 | 481 | 544 | 544 |
| Performance | | | | | | | |
| 5.1 | Travel speed, with/without load | km/h | 17 / 17 | 17 / 17 | 17 / 17 | 17 / 17 | 17 / 17 |
| 5.2 | Lifting speed, with/without load | m/s | 0.5 / 0.6 | 0.5 / 0.6 | 0.44 / 0.6 | 0.44 / 0.6 | 0.4 / 0.6 |
| 5.3 | Lowering speed, with/without load | m/s | 0.52 / 0.5 | 0.52 / 0.5 | 0.52 / 0.5 | 0.52 / 0.5 | 0.52 / 0.5 |
| 5.5 | Rated drawbar pull, with/without load | N | 2680 / 3070 | 2660 / 3060 | 2610 / 3060 | 2600 / 3040 | 2510 / 3000 |
| 5.6 | Maximum drawbar pull, with/without load (5 min short duty) | N | 12020 / 12410 | 12170 / 12560 | 11950 / 12400 | 12110/12550 | 1202 /12510 |
| 5.7 | Gradeability, with/without load | % | 10 / 16 | 9 / 16 | 9 / 16 | 9/15 | 8 / 14 |
| 5.8 | Maximum gradeability, with/without load | % | 27 / 35 | 27 / 35 | 25 / 35 | 25/35 | 23 / 35 |
| 5.9 | Acceleration time (10 metres) with/without load | s | 4.3 / 3.7 | 4.3 / 3.7 | 4.3 / 3.7 | 4.4 / 3.8 | 4.4 / 3.8 |
| 5.10 | Service brakes (mechanical/hydraulic/electric/pneumatic) | | Mech./hydr. | Mech./hydr. | Mech./hydr. | Mech./hydr. | Mech./hydr. |
| Electric motors | | | | | | | |
| 6.1 | Drive motor capacity (60 min. short duty) | kW | 4.5x2 | 4.5x2 | 4.5x2 | 4.5x2 | 4.5x2 |
| 6.2 | Lift motor output at 15% duty factor | kW | 11.5 | 11.5 | 11.5 | 11.5 | 11.5 |
| 6.3 | Battery to DIN 43 531/35/36 A/B/C/no | | DIN 43531 A | DIN 43531 A | DIN 43531 A | DIN 43531 A | DIN 43531 A |
| 6.4 | Battery voltage/capacity at 5-hour discharge | V/Ah | 48V / 625Ah | 48V / 750Ah | 48V / 625Ah | 48V / 750Ah | 48V / 750Ah |
| 6.5 | Battery weight | kg | 855 | 1025 | 855 | 1025 | 1025 |
| 6.6 | Energy consumption according to VDI 60 cycle | kWh/h | - | - | - | - | - |
| Miscellaneous | | | | | | | |
| 8.1 | Type of drive control | | AC | AC | AC | AC | AC |
| 8.2 | Maximum operating pressure for attachments | bar | 181 | 181 | 181 | 181 | 181 |
| 8.3 | Oil flow for attachments | l/min | - | - | - | - | - |
| 8.4 | Noise level, value at operator's ear (EN 12053) | dB(A) | 67 | 67 | 67 | 67 | 67 |
| 8.5 | Towing coupling design / DIN type, ref. | | 15170 / H | 15170 / H | 15170 / H | 15170 / H | 15170 / H |



Wet disc brakes



Easy on/off access



Lateral battery exchange



Large floor space



Multi-function display



Ergonomic cab layout



Choice of seats



Choice of cabins

EDIA EM
THE ELECTRIC DIAMOND

The family name EDIA appears proudly on our award-winning range of electric forklift trucks.

The reputation that Mitsubishi Forklift Trucks enjoys for endurance and reliability has likened them to the quality and enduring value of a diamond.

Continuing improvement may lead to changes in these specifications.

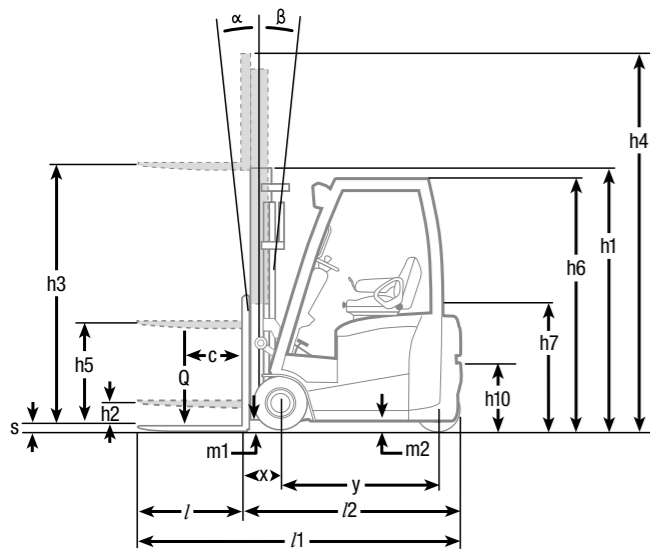
Electric Counterbalance

3 Wheel Pneumatic Tyres • 48 Volt AC Power • **1.3 – 2.0 tonnes**

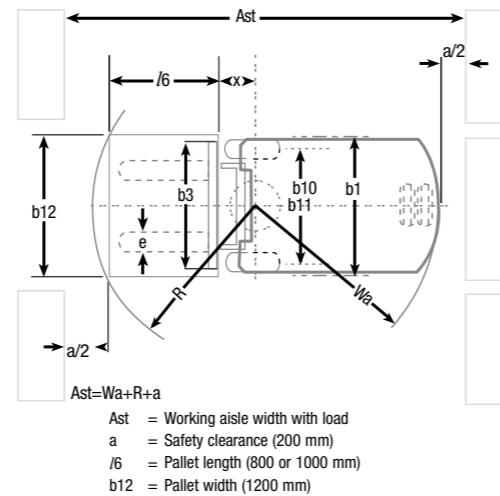
Mast Performance and Capacity

| Mast Type | FB13PNT - FB20PNT | | | | FB13PNT | FB15PNT | FB16CPNT | FB18CPNT | FB16PNT | FB18PNT | FB20PNT |
|-----------|-------------------|----------|----------|-------------|------------------------|------------------------|------------------------|------------------------|------------------------|------------------------|------------------------|
| | h3 mm | h1 mm | h4 mm | h2/h5 mm | Q @ c = 500mm kg | Q @ c = 500mm kg | Q @ c = 500mm kg | Q @ c = 500mm kg | Q @ c = 500mm kg | Q @ c = 500mm kg | Q @ c = 500mm kg |
| Simplex | 2000 | 1480* | 3045 | 80 | 1300 | 1500 | 1600 | 1800 | 1600 | 1800 | 2000 |
| | 2560 | 1760* | 3605 | 80 | 1300 | 1500 | 1600 | 1800 | 1600 | 1800 | 2000 |
| | 2760 | 1860* | 3805 | 80 | 1300 | 1500 | 1600 | 1800 | 1600 | 1800 | 2000 |
| | 3000 | 1980* | 4045 | 80 | 1300 | 1500 | 1600 | 1800 | 1600 | 1800 | 2000 |
| | 3290 | 2125 | 4335 | 80 | 1300 | 1500 | 1600 | 1800 | 1600 | 1800 | 2000 |
| | 3530 | 2245 | 4575 | 80 | 1300 | 1500 | 1600 | 1800 | 1600 | 1800 | 2000 |
| | 3720 | 2385 | 4765 | 80 | 1300 | 1500 | 1600 | 1800 | 1600 | 1800 | 2000 |
| | 4090 | 2570 | 5135 | 80 | 1300 | 1500 | 1600 | 1750 | 1600 | 1800 | 2000 |
| | 4480 | 2775 | 5525 | 80 | 1275 | 1475 | 1600 | 1700 | 1600 | 1800 | 2000 |
| | 5000 | 3035 | 6045 | 80 | 1200 | 1400 | 1525 | 1625 | 1600 | 1750 | 1925 |
| | 5500 | 3285 | 6545 | 80 | 1125 | 1325 | 1425 | 1550 | 1500 | 1675 | 1850 |
| | 6000 | 3535 | 7045 | 80 | 1050 | 1250 | 1300 | 1425 | 1400 | 1550 | 1650 |
| | Duplex | 2800 | 1880* | 3845 | 835 | 1300 | 1500 | 1600 | 1800 | 1600 | 1800 |
| 3000 | | 1980* | 4045 | 935 | 1300 | 1500 | 1600 | 1800 | 1600 | 1800 | 2000 |
| 3295 | | 2125 | 4340 | 1080 | 1300 | 1500 | 1600 | 1800 | 1600 | 1800 | 2000 |
| 3515 | | 2245 | 4560 | 1200 | 1300 | 1500 | 1600 | 1800 | 1600 | 1800 | 2000 |
| 3700 | | 2385 | 4745 | 1340 | 1300 | 1500 | 1600 | 1800 | 1600 | 1800 | 2000 |
| 4030 | | 2570 | 5075 | 1525 | 1300 | 1500 | 1600 | 1750 | 1600 | 1800 | 2000 |
| Triplex | 3710 | 1780* | 4755 | 735 | 1300 | 1500 | 1600 | 1800 | 1600 | 1800 | 2000 |
| | 4010 | 1880* | 5055 | 835 | 1300 | 1500 | 1600 | 1750 | 1600 | 1800 | 2000 |
| | 4310 | 1980* | 5355 | 935 | 1275 | 1475 | 1600 | 1725 | 1600 | 1800 | 2000 |
| | 4750 | 2125 | 5795 | 1080 | 1225 | 1425 | 1550 | 1650 | 1600 | 1800 | 2000 |
| | 5090 | 2245 | 6135 | 1200 | 1175 | 1375 | 1500 | 1600 | 1775 | 1900 | |
| | 5490 | 2385 | 6535 | 1340 | 1125 | 1325 | 1450 | 1550 | 1675 | 1825 | |
| | 5990 | 2570 | 7035 | 1525 | 1075 | 1275 | 1375 | 1375 | 1450 | 1500 | 1650 |
| | 6490 | 2830 | 7535 | 1785 | 950 | 1050 | 1050 | 1050 | 1175 | 1175 | 1350 |
| 7000 | 3035 | 8045 | 1990 | 725 | 725 | 725 | 725 | 850 | 850 | 1100 | |

(Consult your distributor for the maximum back tilt allowed to obtain the capacities specified)
* lower than overhead guard



- h1 = Height with mast lowered
- h2 = Standard free lift
- h3 = Lift height
- h4 = Height with mast raised
- h5 = Full free lift
- Q = Lifting capacity, rated load
- c = Load centre (distance)



- Ast = Working aisle width with load
- a = Safety clearance (200 mm)
- l6 = Pallet length (800 or 1000 mm)
- b12 = Pallet width (1200 mm)

Integrated Presence System 2 (IPS²)



Hydraulic and travel interlock systems prevent all movement if the driver is not seated. Automatic warnings remind the driver to fasten the seatbelt and apply the parking brake. An electronic parking brake automatically activates when the driver leaves the seat.

The term 'Integrated Presence System' (IPS) is intended as a trading style, only to describe a number of design features on the Mitsubishi trucks to which IPS is applied. It does not imply that the truck can be driven without appropriate operator training and without due care and attention. The manufacturer (MCFE, Almere, the Netherlands) cannot accept any responsibility for any accidents or damage caused by incorrect or dangerous use of its equipment.

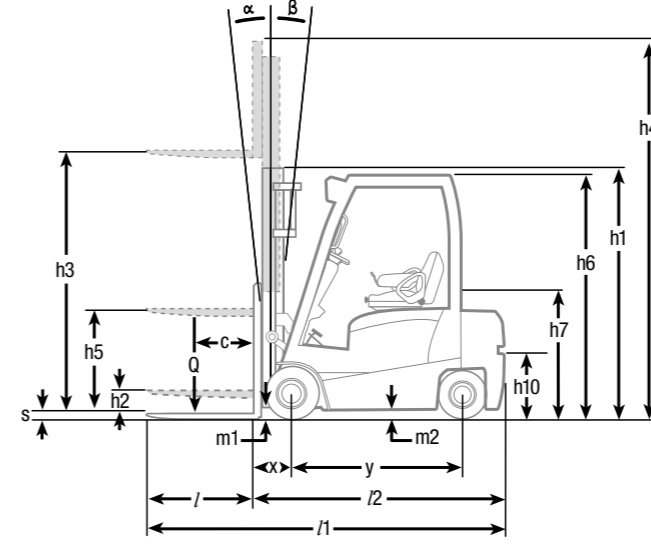
Electric Counterbalance

4 Wheel Pneumatic Tyres • 48 Volt AC Power • **1.6 – 2.0 tonnes**

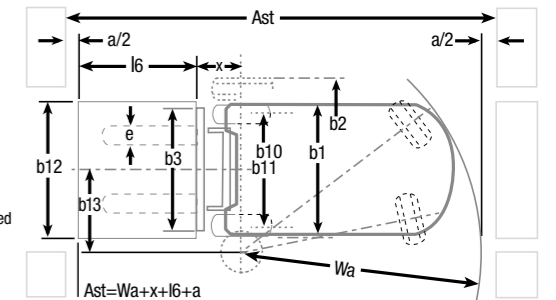
Mast Performance and Capacity

| Mast Type | FB16CPN-FB20PN | | | | FB16CPN | FB18CPN | FB16PN | FB18PN | FB20PN |
|-----------|----------------|----------|----------|-------------|------------------------|------------------------|------------------------|------------------------|------------------------|
| | h3 mm | h1 mm | h4 mm | h2/h5 mm | Q @ c = 500mm kg | Q @ c = 500mm kg | Q @ c = 500mm kg | Q @ c = 500mm kg | Q @ c = 500mm kg |
| Simplex | 2000 | 1480* | 3045 | 80 | 1600 | 1800 | 1600 | 1800 | 2000 |
| | 2560 | 1760* | 3605 | 80 | 1600 | 1800 | 1600 | 1800 | 2000 |
| | 2760 | 1860* | 3805 | 80 | 1600 | 1800 | 1600 | 1800 | 2000 |
| | 3000 | 1980* | 4045 | 80 | 1600 | 1800 | 1600 | 1800 | 2000 |
| | 3290 | 2125 | 4335 | 80 | 1600 | 1800 | 1600 | 1800 | 2000 |
| | 3530 | 2245 | 4575 | 80 | 1600 | 1800 | 1600 | 1800 | 2000 |
| | 3720 | 2385 | 4765 | 80 | 1600 | 1800 | 1600 | 1800 | 2000 |
| | 4090 | 2570 | 5135 | 80 | 1600 | 1800 | 1600 | 1800 | 2000 |
| | 4480 | 2775 | 5525 | 80 | 1600 | 1775 | 1600 | 1800 | 2000 |
| | 5000 | 3035 | 6045 | 80 | 1600 | 1700 | 1600 | 1775 | 1925 |
| | 5500 | 3285 | 6545 | 80 | 1475 | 1475 | 1575 | 1575 | 1850 |
| | 6000 | 3535 | 7045 | 80 | 1075 | 1075 | 1175 | 1175 | 1750 |
| | Duplex | 2800 | 1880* | 3845 | 835 | 1600 | 1800 | 1600 | 1800 |
| 3000 | | 1980* | 4045 | 935 | 1600 | 1800 | 1600 | 1800 | 2000 |
| 3295 | | 2125 | 4340 | 1080 | 1600 | 1800 | 1600 | 1800 | 2000 |
| 3515 | | 2245 | 4560 | 1200 | 1600 | 1800 | 1600 | 1800 | 2000 |
| 3700 | | 2385 | 4745 | 1340 | 1600 | 1800 | 1600 | 1800 | 2000 |
| 4030 | | 2570 | 5075 | 1525 | 1600 | 1800 | 1600 | 1800 | 2000 |
| Triplex | 3710 | 1780* | 4755 | 735 | 1600 | 1800 | 1600 | 1800 | 2000 |
| | 4010 | 1880* | 5055 | 835 | 1600 | 1800 | 1600 | 1800 | 2000 |
| | 4310 | 1980* | 5355 | 935 | 1600 | 1775 | 1600 | 1800 | 2000 |
| | 4750 | 2125 | 5795 | 1080 | 1600 | 1725 | 1600 | 1800 | 1950 |
| | 5090 | 2245 | 6135 | 1200 | 1600 | 1675 | 1600 | 1750 | 1900 |
| | 5490 | 2385 | 6535 | 1340 | 1500 | 1500 | 1600 | 1625 | 1850 |
| | 5990 | 2570 | 7035 | 1525 | 1100 | 1100 | 1200 | 1200 | 1775 |
| | 6490 | 2830 | 7535 | 1785 | 800 | 800 | 900 | 900 | 1325 |
| 7000 | 3035 | 8045 | 1990 | 575 | 575 | 675 | 675 | 950 | |

(Consult your distributor for the maximum back tilt allowed to obtain the capacities specified)
* lower than overhead guard



- h1 = Height with mast lowered
- h2 = Standard free lift
- h3 = Lift height
- h4 = Height with mast raised
- h5 = Full free lift
- Q = Lifting capacity, rated load
- c = Load centre (distance)
- Ast = Working aisle width with load
- a = Safety clearance (200 mm)
- l6 = Pallet length (800 or 1000 mm)
- b12 = Pallet width (1200 mm)



Controlled Cornering System (CCS)



CCS assists drivers by dynamically reducing the maximum speed when cornering. CCS monitors the steering angle and applies a safe speed limit – in a way that feels natural to drivers.

Versatile Performance



IPX4 waterproofing including IP54 specifications for drive and hydraulic motors do more than keep EDIA protected – they keep workplaces clean, too. So EDIA is popular with wet and hygienic applications. EDIA can be fitted with an excellent choice of cabins – allowing for regular work in the cold and rain.